

**Development Data**

**BUILDING 'A'**  
 ONE FLOOR = 14,770 S.F.  
 OFFICE : = 1,094 S.F.  
 TOTAL FLOOR AREA; = 15,864 S.F.

**BUILDING 'B'**  
 ONE FLOOR = 22,450 S.F.  
 SECOND FLOOR = 22,450 S.F.  
 THIRD FLOOR = 23,650 S.F.  
 TOTAL FLOOR AREA = 68,550 S.F.

**A + B TOTAL FLOOR AREA = 84,414 S.F.**

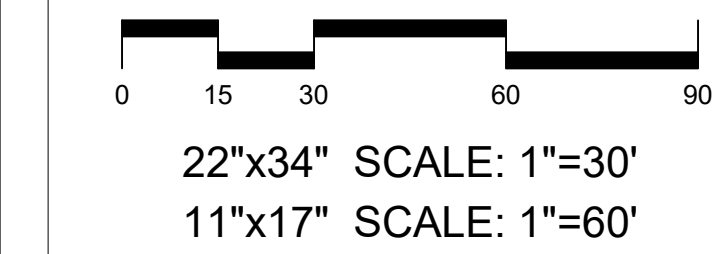
**FUTURE PHASE 2 BUILDING 'C'**  
 ONE FLOOR = 14,430 GSF

**TOTAL AREA**  
**BUILDINGS A+B+C = 98,844 S.F.**

**PARKING 22 SPACES**

**BUILDING SECTION LINES**  
 See Sheet 104

**SNOW STORAGE-15,100 SF**



**Jack Johnson Consulting**  
 Designing World Destinations  
 In-Person - 1910 Prospector Avenue - Suite 200 - Park City - Utah 84060  
 Telephone - 435.645.9001 - Facsimile - 435.776.7590  
 www.jackjohnson.com

DATE:	March, 2020
DESIGNED BY:	STAFF
DRAWN BY:	bej
REVIEWED BY:	DP
PROJECT:	1275
ISSUE:	LOW IMPACT APP

REVISIONS:
1) 7-2020 - REVISIONS TO LIP PER COUNTY COMMENTS
2)
3)
4)
5)
6)

**SILVER CREEK SELF STORAGE**  
 LOW IMPACT SUBMITTAL

HJ SILVER CREEK LP

SITE PLAN | **C101**

1275 Silver Creek Estates\SC-Low Impact\PL-Eng\01\_Engineering\Phase 1\02\_Sheet\_Set\01\_SITE PLAN.dwg  
 File name: SITE PLAN.dwg | plot date: September 1, 2020 | plotted by: BRAD JOHNSON